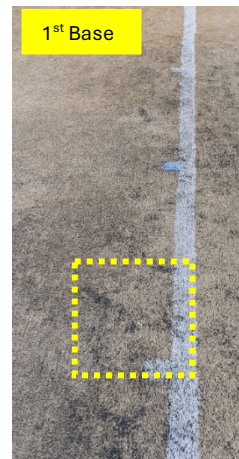
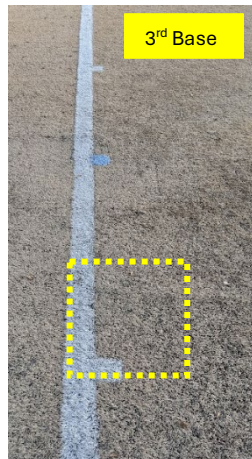
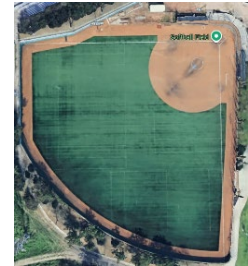


FIELD USE INSTRUCTIONS: LHCC Main Field

Field Prep

1. Unlock dugouts using key from the storage container at LHCC Main Field; please return the key when done. Get the portable pitching mound (labelled "LHLL" on underside) and 3 bases from the storage container by the batting cage behind the 1st base foul area and place the mound and bases per the following instructions
2. The pitching mound is placed with the long slope towards home plate and in a straight line between home plate and 2nd base. The edge of the rubber on the pitching mound closest to home plate is to be 46 feet from the back corner of home plate.
3. Place each base on the white square closest to home plate. For first and third bases, one edge of the base and the foul edge of the foul line should be aligned, and the edge of the base closest to home plate should be aligned with the edge of the white square closest to home plate. For second base, the corner of the white square closest to home plate should align with the corner of the base. Pictures shown below for clarification.



Field Take-Down

1. Remove bases and the portable pitching mound and put them away in the shed
2. Take your kid home or out for a treat and tell them how much you enjoyed watching them play ball!